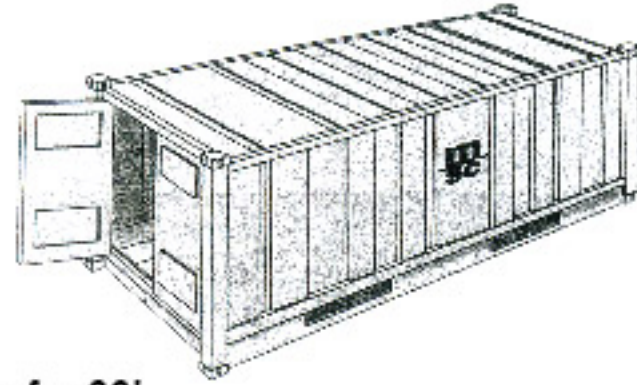


Standard 20'

INSIDE LENGTH	INSIDE WIDTH	INSIDE HEIGHT	DOOR WIDTH	DOOR HEIGHT	CAPACITY	TARE WEIGHT	MAXI CARGO
19'4"	7'8"	7'10"	7'8"	7'6"	1,172 Cft	4,916 Lbs	47,900 Lbs
5.900 m	2.350 m	2.393 m	2.342 m	2.280 m	33.2 Cu.m	2,230 Kgs	21,770 Kgs

Standard 40'

INSIDE LENGTH	INSIDE WIDTH	INSIDE HEIGHT	DOOR WIDTH	DOOR HEIGHT	CAPACITY	TARE WEIGHT	MAXI CARGO
39'5"	7'8"	7'10"	7'8"	7'6"	2,390 Cft	8,160 Lbs	59,040 Lbs
12.036 m	2.350 m	2.392 m	2.340 m	2.280 m	67.7 Cu.m	3,700 Kgs	26,780 Kgs

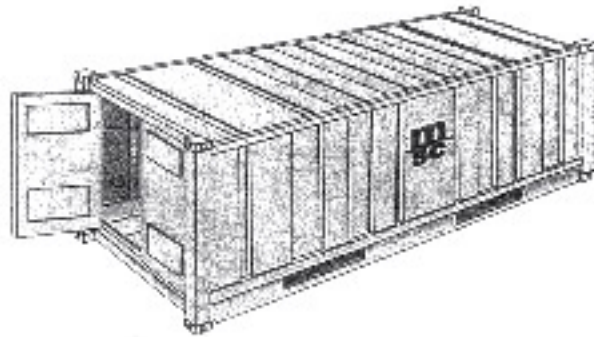


Upgraded 20'

INSIDE LENGTH	INSIDE WIDTH	INSIDE HEIGHT	DOOR WIDTH	DOOR HEIGHT	CAPACITY	TARE WEIGHT	MAXI CARGO
19'4"	7'7"	7'10"	7'6"	7'6"	1,150 Cft	5,060 Lbs	61,996 Lbs
5.900 m	2.311 m	2.390 m	2.286 m	2.280 m	32.63 Cu.m	2,300 Kgs	28,180 Kgs

High Cube 40'

INSIDE LENGTH	INSIDE WIDTH	INSIDE HEIGHT	DOOR WIDTH	DOOR HEIGHT	CAPACITY	TARE WEIGHT	MAXI CARGO
39'5"	7'8"	8'10"	7'8"	8'5"	2,694 Cft	8,760 Lbs	58,450 Lbs
12.036 m	2.350 m	2.697 m	2.338 m	2.585 m	76.3 Cu.m	3,970 Kgs	26,510 Kgs



Reefer 20'

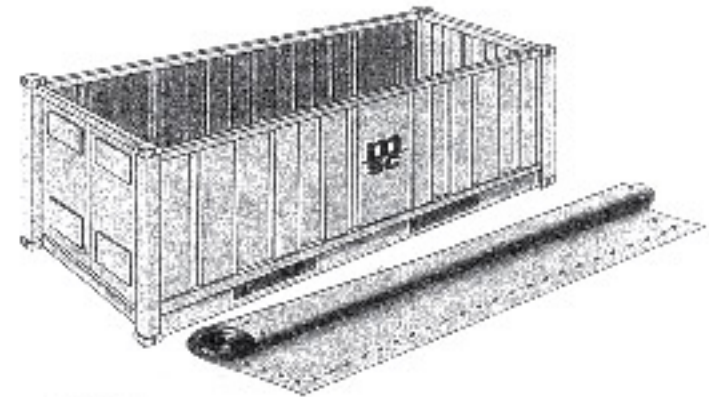
INSIDE LENGTH	INSIDE WIDTH	INSIDE HEIGHT	DOOR WIDTH	DOOR HEIGHT	CAPACITY	TARE WEIGHT	MAXI CARGO
17'8"	7'5"	7'5"	7'5"	7'3"	1,000 Cft	5,280 Lbs	7,040 Lbs
5.425 m	2.275 m	2.260 m	2.258 m	2.216 m	28.3 Cu.m	3,200 Kgs	20,800 Kgs

Reefer 40'

INSIDE LENGTH	INSIDE WIDTH	INSIDE HEIGHT	DOOR WIDTH	DOOR HEIGHT	CAPACITY	TARE WEIGHT	MAXI CARGO
37'8"	7'5"	7'2"	7'5"	7'0"	2,040 Cft	10,780 Lbs	56,276 Lbs
11.493 m	2.270 m	2.197 m	2.282 m	2.155 m	57.8 Cu.m	4,900 Kgs	25,580 Kgs

Reefer 40' High Cube

INSIDE LENGTH	INSIDE WIDTH	INSIDE HEIGHT	DOOR WIDTH	DOOR HEIGHT	CAPACITY	TARE WEIGHT	MAXI CARGO
37'11"	7'6"	8'2"	7'6"	8'0"	2,344 Cft	9,900 Lbs	57,651 Lbs
11.557 m	2.294 m	2.500 m	2.294 m	2.440 m	66.6 Cu.m	4,500 Kgs	25,980 Kgs

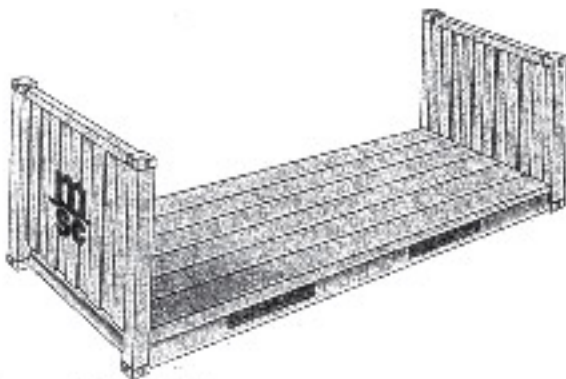


Open Top 20' (Upgraded also available)

INSIDE LENGTH	INSIDE WIDTH	INSIDE HEIGHT	DOOR WIDTH	DOOR HEIGHT	CAPACITY	TARE WEIGHT	MAXI CARGO
19'4"	7'7"	7'8"	7'6"	7'2"	1,136 Cft	5,280 Lbs	47,620 Lbs
5.894 m	2.311 m	2.354 m	2.286 m	2.184 m	32.23 Cu.m	2,400 Kgs	21,600 Kgs

Open Top 40'

INSIDE LENGTH	INSIDE WIDTH	INSIDE HEIGHT	DOOR WIDTH	DOOR HEIGHT	CAPACITY	TARE WEIGHT	MAXI CARGO
39'5"	7'8"	7'8"	7'8"	7'5"	2,350 Cft	8,490 Lbs	58,710 Lbs
12.028 m	2.350 m	2.345 m	2.341 m	2.274 m	65.5 Cu.m	3,850 Kgs	26,630 Kgs

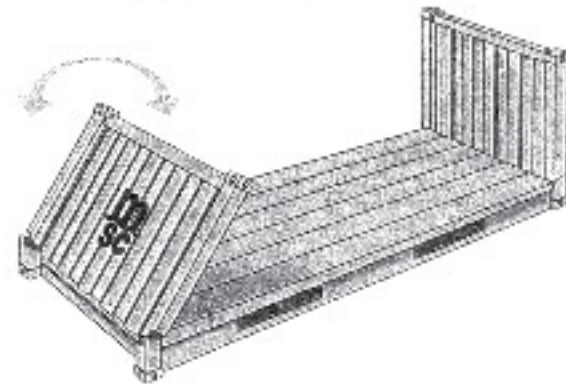


Flat Rack 20'

INSIDE LENGTH	INSIDE WIDTH	INSIDE HEIGHT	DOOR WIDTH	DOOR HEIGHT	CAPACITY	TARE WEIGHT	MAXI CARGO
18'5"	7'3"	7'4"	-	-	-	5,578 Lbs	47,333 Lbs
5.620 m	2.220 m	2.233 m	-	-	-	2,530 Kgs	21,470 Kgs

Flat Rack 40'

INSIDE LENGTH	INSIDE WIDTH	INSIDE HEIGHT	DOOR WIDTH	DOOR HEIGHT	CAPACITY	TARE WEIGHT	MAXI CARGO
39'7"	6'10"	6'5"	-	-	-	12,081 Lbs	85,800 Lbs
12.080 m	2.438 m	2.103 m	-	-	-	5,480 Kgs	39,000 Kgs



Flat Rack Collapsible 20'

INSIDE LENGTH	INSIDE WIDTH	INSIDE HEIGHT	DOOR WIDTH	DOOR HEIGHT	CAPACITY	TARE WEIGHT	MAXI CARGO
18'6"	7'3"	7'4"	-	-	-	6,061 Lbs	61,117 Lbs
5.618 m	2.208 m	2.233 m	-	-	-	2,750 Kgs	27,730 Kgs

Flat Rack Collapsible 40' (Stak Bed)

INSIDE LENGTH	INSIDE WIDTH	INSIDE HEIGHT	DOOR WIDTH	DOOR HEIGHT	CAPACITY	TARE WEIGHT	MAXI CARGO
39'7"	8'10"	6'5"	-	-	-	12,787 Lbs	85,800 Lbs
12.080 m	2.126 m	2.043 m	-	-	-	5,800 Kgs	39,000 Kgs

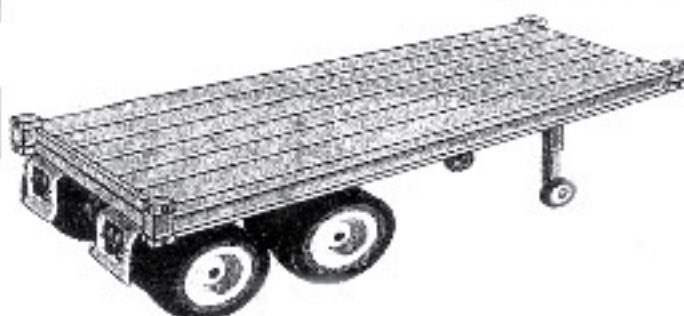


Platform 20'

INSIDE LENGTH	INSIDE WIDTH	INSIDE HEIGHT	DOOR WIDTH	DOOR HEIGHT	CAPACITY	TARE WEIGHT	MAXI CARGO
19'11"	8'00"	7'04"	-	-	-	6,061 Lbs	52,896 Lbs
6.058 m	2.438 m	2.233 m	-	-	-	2,750 Kgs	24,000 Kgs

Platform 40'

INSIDE LENGTH	INSIDE WIDTH	INSIDE HEIGHT	DOOR WIDTH	DOOR HEIGHT	CAPACITY	TARE WEIGHT	MAXI CARGO
40'00"	8'00"	6'5"	-	-	-	12,783 Lbs	86,397 Lbs
12.18 m	2.40 m	1.95 m	-	-	-	5,800 Kgs	39,200 Kgs



Chassis 33' Tri-Axle

OVERALL EXTENDED 41' 3"	10,900 Lbs	44,500 Lbs*
ghezza massima 12,60m.	4,950 Kg.	20,185 Kg. **

Chassis 40' Gooseneck

OVERALL EXTENDED 40'	6,500 Lbs	44,500 Lbs*
ghezza massima 12,20m.	2,950 Kg.	20,185 Kg. **

Chassis 23,5'

OVERALL UNEXTENDED 23' 6"	6,600 Lbs	35,500 Lbs
OVERALL TEXTENDED 27' 2"		39,500 Kgs
Lungh. massima non esteso 7,20m.	2,995 Kgs	16,100 Kgs
Lungh. massima esteso 8,30m.		17,920 Kgs